

LiFePO4 Power Battery LFP12V20 12.8V 20Ah



LiFePO4 Technology Brief Introduce

LiFePO4 technology surpasses lead acid technology in all areas: reliability, performance, security, cleanliness...

- Weight/power ratio = 70% lighter than lead acid batteries
- Battery life = lasts 4 to 5 times longer than conventional lead acid batteries
- Very low self-discharge rate
- Wide range of operating temperatures = from 20° C to 60° C
- Unlike lead acid batteries, incomplete charges have no impact on battery life
- Extra security = leak-proof, as the battery does not contain acid. LiFePO4 batteries can therefore be installed in any position without risk of leakage.

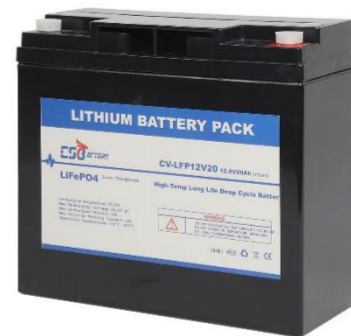
LiFePO4 technology eliminates the risk of explosion or combustion.

LiFePO4 batteries are equipped with protection against short circuit currents (BMS), which protects the battery from short circuits, overloads and deep discharge. The BMS also balances cells in order to guarantee longer battery life.

Long Life

Lithium Iron Phosphate

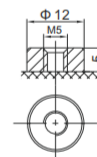
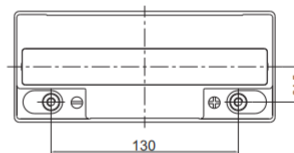
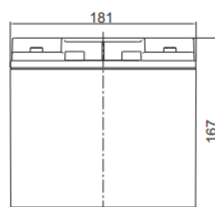
Deep Cycle



Applications

- Electric Vehicles, Electric Mobility
- Solar/Wind Energy Storage System
- UPS, Backup Power
- Telecommunication
- Medical Equipment
- Lighting

Dimensions & Weight



F13-BP TERMINAL

- Length: 181 ± 1mm Width: 77 ± 1mm Height: 167 ± 1mm Total Height: 170 ± 1mm
- Weight: 2.250 ± 0.1kgs



Technical Specifications

Electrical Characteristics	Nominal Voltage	12.8V
	Nominal Capacity	20Ah
	Energy	256Wh
	Terminal	M6
	Cycle Life	>2000cycles @1C
	Months Self Discharge	<3%
	Efficiency of Charge	100% @0.2C
Standard Charge	Efficiency of Discharge	96 ~ 99% @0.5C
	Charge Voltage	14.6-15.2V
	Charge Mode	0.2C to 13.6V, then 13.6V, charge current to 0.02C(CC/CV)
	Charge Current	6A
Standard Discharge	Max. Charge Current	20A
	Charge Cut-off Voltage	14.6V ± 0.2
	Continuous Current	10A
Environmental	Max continuous discharge current	20A
	Discharge Cut-off Voltage	10V
	Charge Temperature	0 °C to 45 °C (32 F to 113 F) @60 ± 25 % Relative Humidity
	Discharge Temperature	-20 °C to 60 °C (-4F to 140 F) @60 ± 25 % Relative Humidity
Mechanical	Storage Temperature	0 °C to 40 °C (32 F to 104 F) @60 ± 25 % Relative Humidity
	Water Dust Resistance	IP21
	Cell & Method	32650, 4S3P
	Plastic Case	ABS
	Dimensions (in./mm.)	181*77*170mm (Customized)
	Weight (lbs./kg.)	Approx: 2.25Kg (4.96bs)
	Gravimetric specific energy	113WH/KG
Bluetooth (optional)	/	
LCD display (optional)	/	

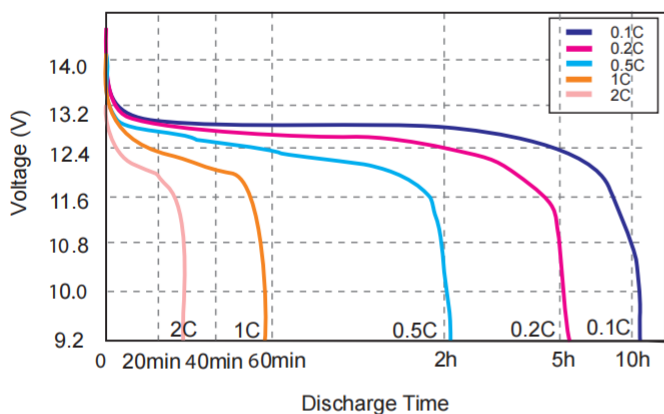
Note: The above data are average values, and can be obtained within 3 charge/discharge cycles. These are not minimum values. Cell and battery designs/specifications are subject to modification without notice. Contact **CSBattery** for the latest information.

BMS Specifications

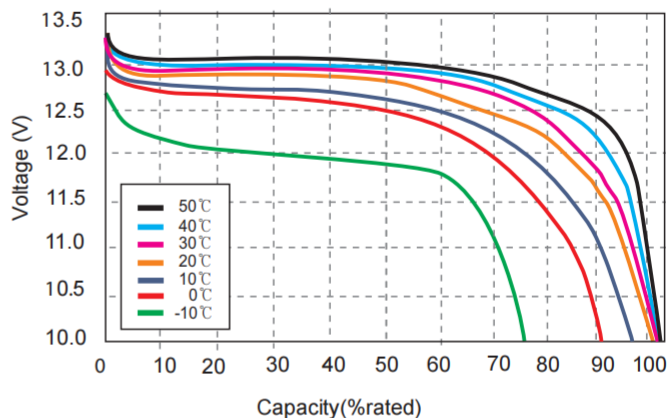
- Overcharge detection function
- Over discharge detection function
- Over current detection function
- Temperature protection
- Short detection function
- Balance function

Performance Characteristics

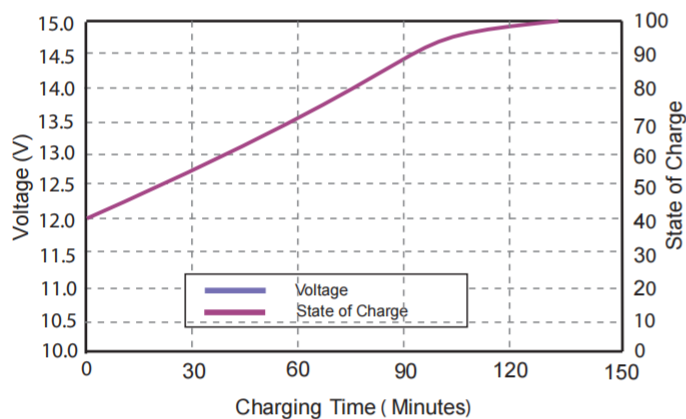
Different Rate Discharge Curve (25°C)



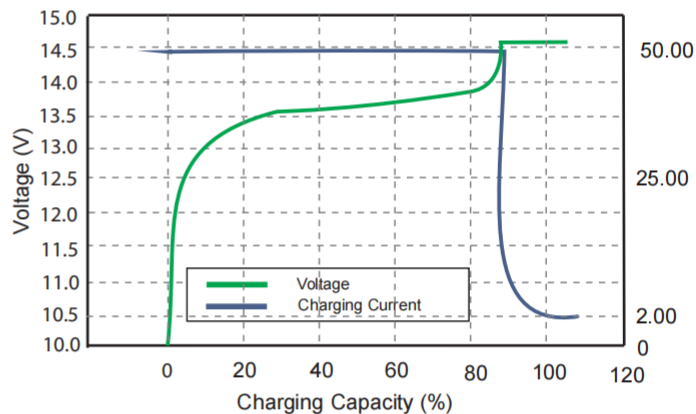
Different Temperature Discharge Curve At 0.5c



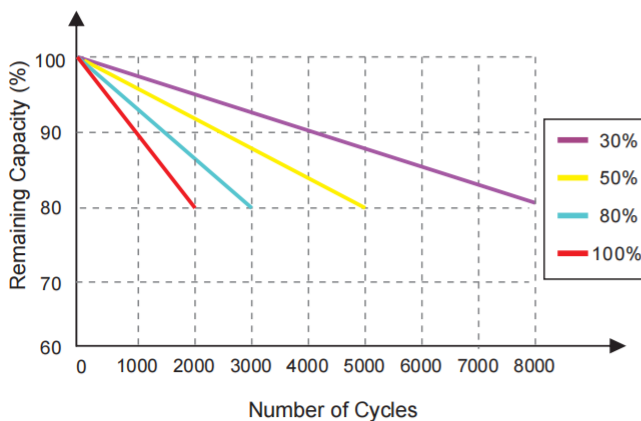
State Of Charge Curve At 0.5c (25°C)



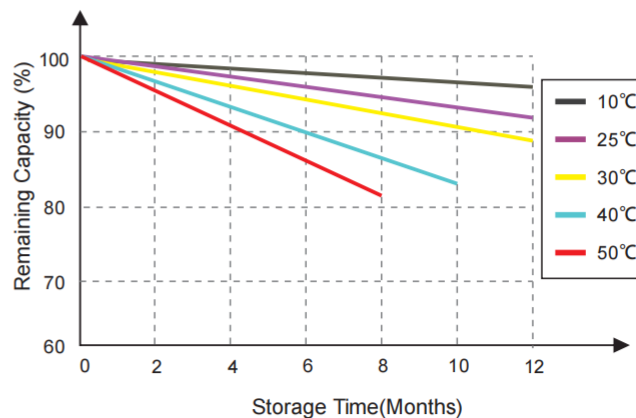
Charging Characteristics At 0.5c (25°C)



Cycle Life Curve At 1c According Dod



Self Discharge Characteristics Curve



SAFETY WARNING: USE ONLY WITHIN THE ALLOWED PARAMETERS. Do not short circuit or over-load the battery. Charge only using an approved charger designed specifically to charge this battery. Do not heat above maximum temperatures indicated. Never crush, mutilate, puncture or abuse the battery. Do not dismantle the pack or disable any of the protective devices or circuits. **DO NOT USE THE BATTERY IF YOU SUSPECT IT MAY BE FAULTY OR DAMAGED.**

Add: Building Evolution, Xingdong industry Park, NO.61, Liuxian 2nd Road, Baoan, Shenzhen, China.
Tel: +86-755-29123661 Email: Sales@CSBattery.cn , Support@CSBattery.cn
Website: www.CSBattery.cn