

OPzS Deep Cycle Tubular Flooded Battery 100PzS1000

CSBattery OPzS series is flooded Lead Acid battery that adopts Tubular Plate technology to offer high reliability and performance. The Battery is designed and manufactured according to standards and with DIN40736-2/IEC60896-11 positive spine and patent formula of die-casting active material. OPzS series exceeds standard values with more DIN40736-2/IEC60896-11 than 20 years floating design even more suitable for life at 25°C and is cyclic use(PV/solar, traction etc) under extreme operating conditions.

2V
1000Ah

Flooded
Technology

Tubular
Plate



Applications

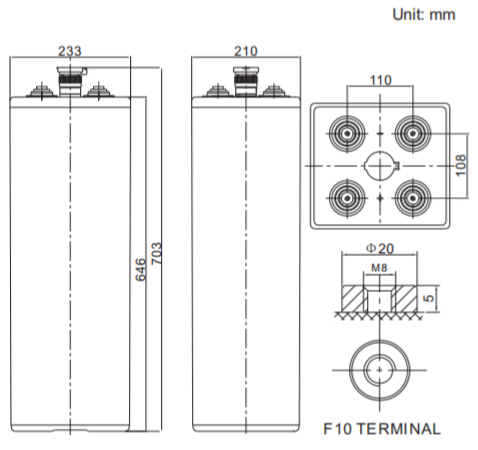
- Solar & Wind Power system
- Nuclear power station
- Telecom backup power supply
- energy saving requirements
Emergency Power System

General Features

- ✓ It can discharge at -40°C~70°C, Charge at 0-50°C
- ✓ Long life expectancy of 20+ years in floating condition
- ✓ Adopts quality silicon nano gel electrolyte
- ✓ Excellent deep discharge recovery capability
- ✓ Deep cycle performance: up to 3300

Dimensions & Weight

Technical Specifications



Cells Per Unit	1
Voltage Per Unit	2
Nominal Capacity	1000Ah@10hr-rate to 1.85V per cell @25°C
Weight	Without Electrolyte 57.8 kg/With Electrolyte 78.0kg
Internal Resistance	Approx. 0.28 mΩ
Terminal	F10(M8)
Max. Discharge Current	3800A (5 sec)
Design Life	20 years (floating charge)
Maximum Charging Current	125.0 A
Reference Capacity	C24 1197.0AH C48 1346.6AH C72 1414.0AH C100 1446.4AH C120 1475.3AH C240 1500.0AH
Float Charging Voltage	2.23 V~2.25 V @ 25°C Temperature Compensation: -3mV/°C/Cell
Cycle Use Voltage	2.40 V~2.45 V @ 25°C Temperature Compensation: -4mV/°C/Cell
Operating Temperature Range	Discharge: -15°C~50°C Charge: 0°C~40°C Storage: -15°C~50°C
Normal Operating Temperature Range	25°C ±5°C
Self Discharge	Valve Regulated Lead Acid (VRLA) batteries can be stored for up to 6 months at 25°C and then recharging is recommended. Monthly Self-discharge ratio is less than 3.5% at 25°C. Please charged batteries before using.
Container Material	A.B.S. UL94-HB, UL94-V0 Optional.

Length	233±1mm (9.17 inches)
Width	210±1mm (8.27 inches)
Height	646±1mm (25.4 inches)
Total Height	703±1mm (27.7 inches)
Torque Value	10~12 N*m

Battery Discharge Table

Discharge Constant Current per Cell (Amperes at 25° C)

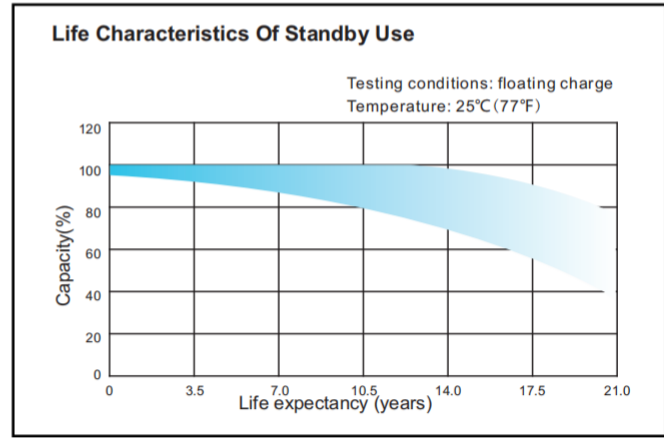
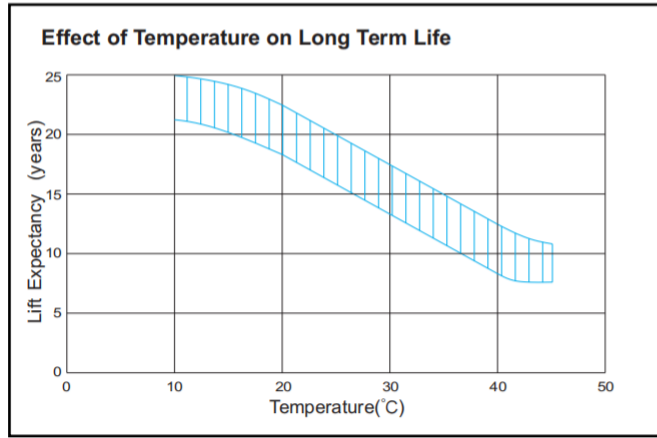
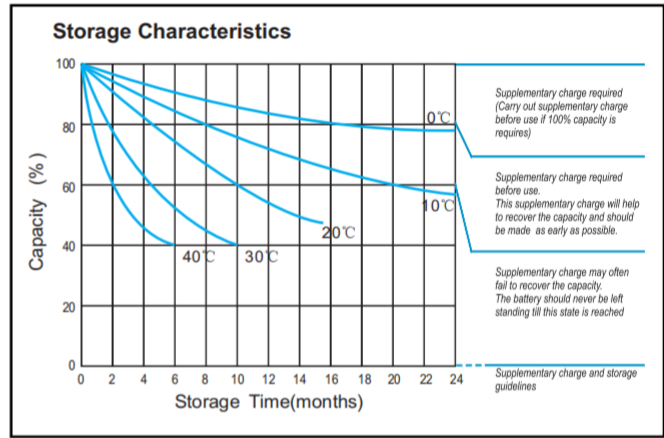
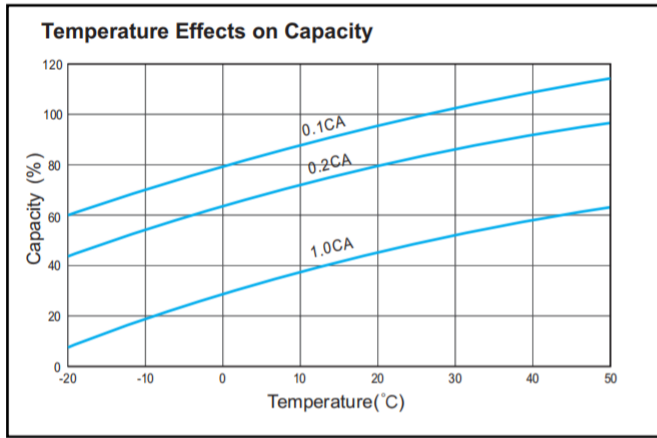
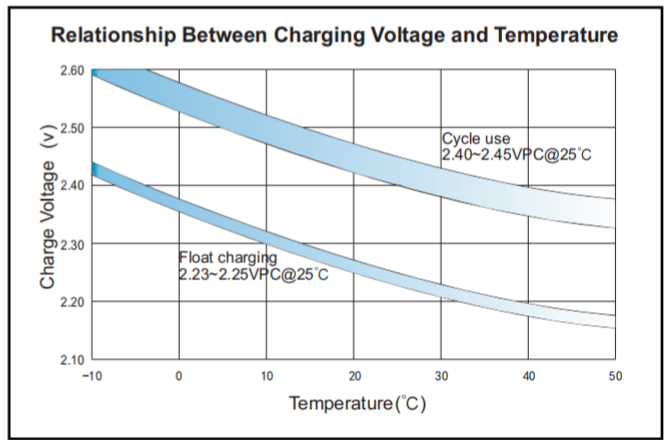
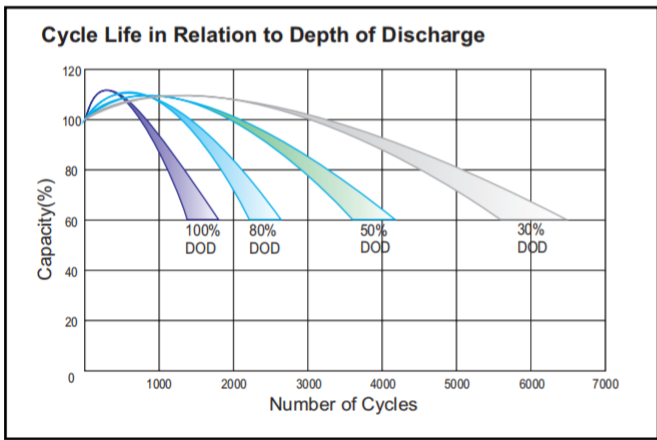
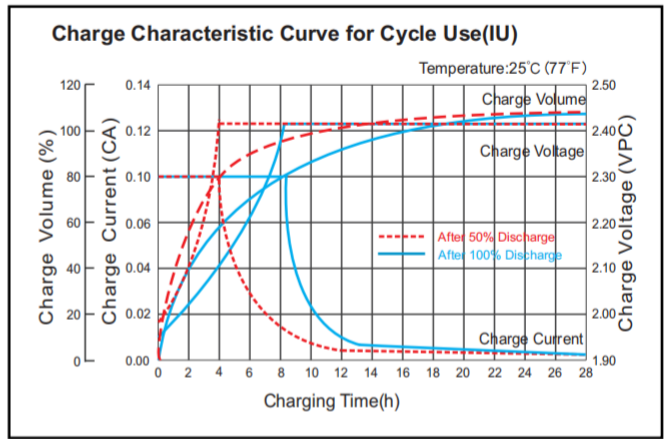
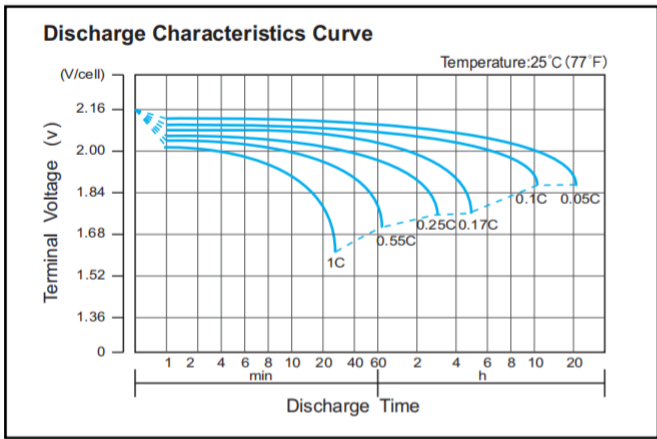
F.V/ Time	30min	1h	2h	3h	4h	5h	6h	8h	10h	20h
1.90V	532.1	421.8	297.4	226.7	179.6	158.3	139.7	109.0	93.45	49.06
1.87V	594.8	465.0	319.0	241.3	189.5	167.8	148.1	114.1	97.65	51.27
1.83V	681.3	519.1	346.1	258.1	199.5	173.7	153.3	119.2	101.9	53.47
1.80V	757.1	562.4	359.1	265.7	203.5	178.5	157.5	122.2	105.0	55.13
1.75V	843.6	602.4	375.3	274.2	206.9	182.1	160.7	124.3	107.1	56.23
1.70V	930.1	621.9	386.1	280.7	210.5	184.5	162.8	125.3	108.2	56.78
1.65V	959.3	660.8	399.1	287.7	213.5	186.8	164.9	126.3	109.2	57.33
1.60V	1000	683.5	414.2	297.4	219.5	189.2	167.0	127.3	110.3	57.88

Discharge Constant Power per Cell (Watts at 25° C)

F.V/ Time	30min	1h	2h	3h	4h	5h	6h	8h	10h	20h
1.90V	1018	809.7	575.0	440.8	351.4	311.7	276.2	218.0	190.5	100.0
1.87V	1121	879.3	609.8	466.1	370.4	329.2	291.9	227.1	198.6	104.3
1.83V	1255	958.7	648.9	492.6	388.3	339.6	301.4	235.3	205.7	108.0
1.80V	1372	1023	670.6	505.7	395.7	348.4	308.7	240.4	210.8	110.7
1.75V	1488	1068	692.4	517.5	401.0	355.6	314.0	243.4	213.9	112.3
1.70V	1596	1079	709.8	528.3	407.3	359.2	317.1	245.5	215.9	113.4
1.65V	1623	1127	729.3	539.3	412.6	362.9	320.3	247.5	216.9	113.9
1.60V	1642	1162	746.7	552.6	423.2	364.5	322.4	248.5	218.0	114.4

OPzS Deep Cycle Tubular Flooded Battery 100PzS1000

Performance Characteristics



Note: The above data are average values, and can be obtained within 3 charge/discharge cycles. These are not minimum values. Cell and battery designs/specifications are subject to modification without notice. Contact **CSBattery** for the latest information.

Add: Building Evolution, Xingdong industry Park, NO.61, Liuxian 2nd Road, Baoan, Shenzhen, China.

Tel: +86-755-29123661 Email: Sales@CSBattery.cn, Support@CSBattery.cn

Website: www.CSBattery.cn