

OPzS Deep Cycle Tubular Flooded Battery

40PzS150

CSBattery OPzS series is flooded Lead Acid battery that adopts Tubular Plate technology to offer high reliability and performance. The Battery is designed and manufactured according to standards and with DIN40736-2/IEC60896-11 positive spine and patent formula of die-casting active material. OPzS series exceeds standard values with more DIN40736-2/IEC60896-11 than 20 years floating design even more suitable for life at 25°C and is cyclic use(PV/solar, traction etc) under extreme operating conditions.

2V
150Ah

Flooded
Technology

Tubular
Plate



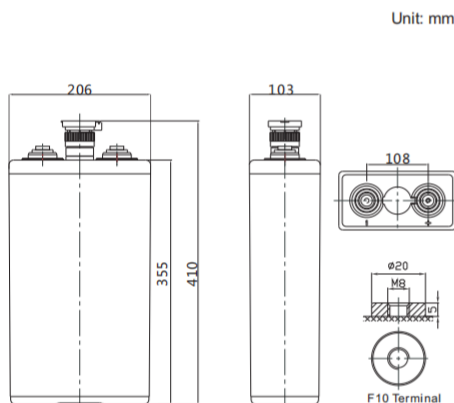
Applications

- Solar & Wind Power system
- Nuclear power station
- Telecom backup power supply
- energy saving requirements
Emergency Power System

General Features

- ✓ It can discharge at -40°C-70°C, Charge at 0-50°C
- ✓ Long life expectancy of 20+ years in floating condition
- ✓ Adopts quality silicon nano gel electrolyte
- ✓ Excellent deep discharge recovery capability
- ✓ Deep cycle performance: up to 3300

Dimensions & Weight



Length	103±2mm (4.01 inches)
Width	206±2mm (8.11 inches)
Height	355±2mm (14.0 inches)
Total Height	410±2mm (16.1 inches)
Torque Value	10~12 N·m

Technical Specifications

Cells Per Unit	1
Voltage Per Unit	2
Nominal Capacity	150Ah@10hr-rate to 1.80V per cell @25°C
Weight	Without Electrolyte 11.4kg/With Electrolyte 15.9kg
Internal Resistance	Approx. 0.95 mΩ
Terminal	F10(M8)
Max. Discharge Current	750A (5 sec)
Design Life	20 years (floating charge)
Max. Charging Current	22.5 A
Reference Capacity	C3 122.1AH C5 136.0AH C10 150.0AH C20 181.6AH
Float Charging Voltage	2.23 V~2.25 V @ 25°C Temperature Compensation: -3mV/°C/Cell
Cycle Use Voltage	2.40 V~2.45 V @ 25°C Temperature Compensation: -4mV/°C/Cell
Operating Temperature Range	Discharge: -15°C~50°C Charge: 0°C~40°C Storage: -15°C~50°C
Normal Operating Temperature Range	25°C ±5°C
Self Discharge	OPzS series is flooded Lead Acid battery . It can be stored for up to 2 years before filling acid. Monthly Self-discharge ratio is less than 3.5% at 20°C. Please charged batteries before using.
Container Material	A.B.S. UL94-HB, UL94-V0 Optional.

Battery Discharge Table

Discharge Constant Current per Cell (Amperes at 25° C)

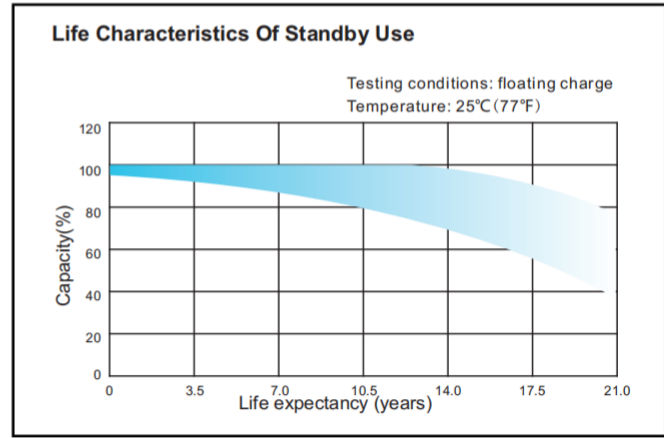
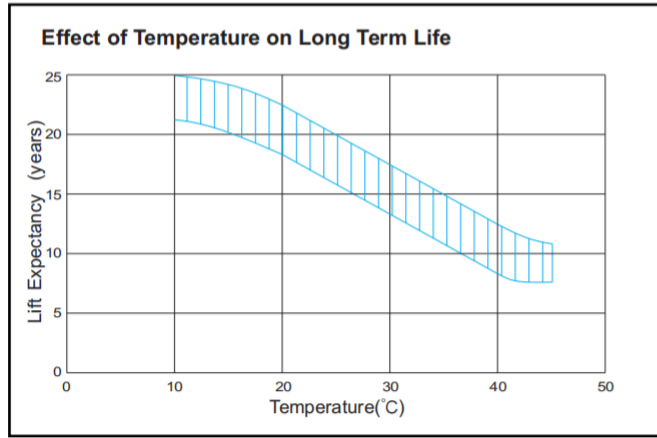
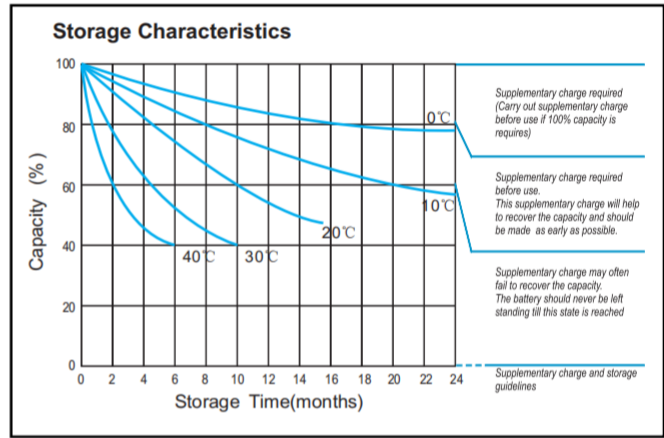
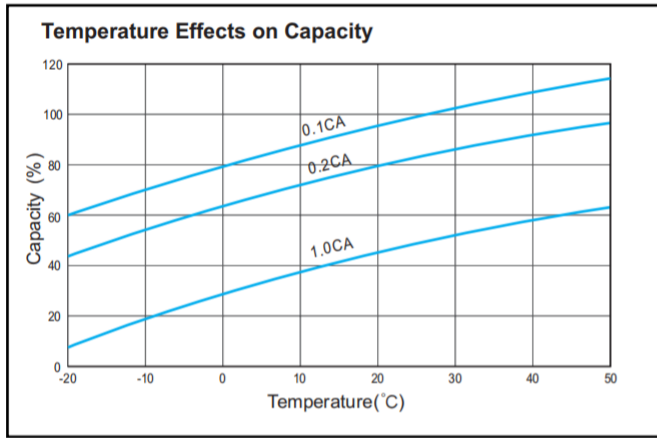
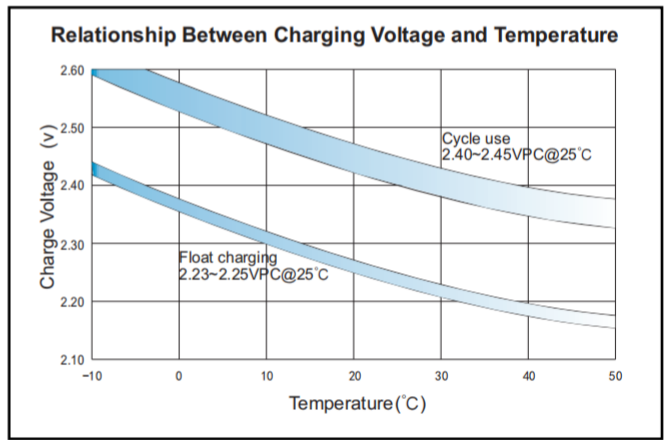
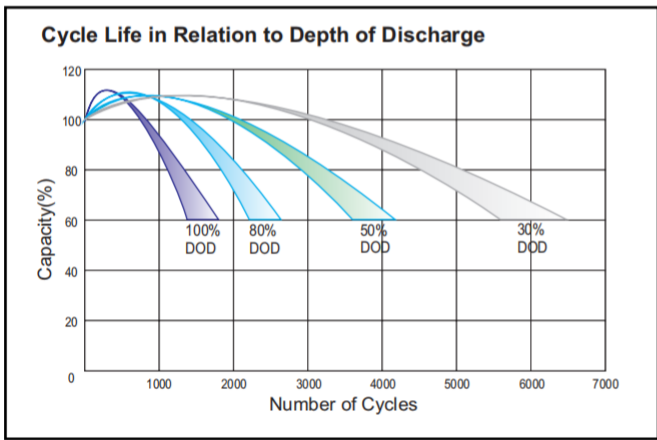
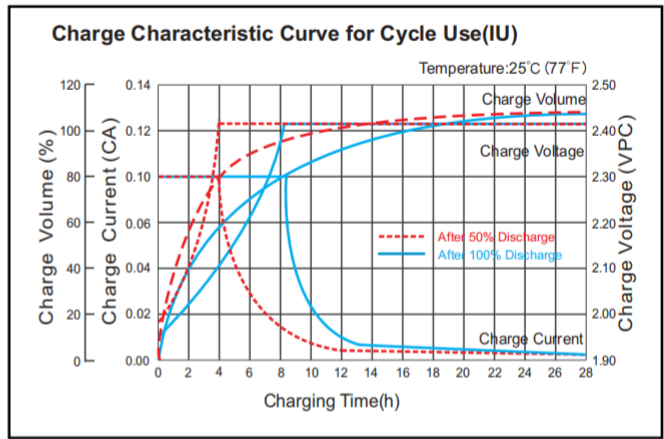
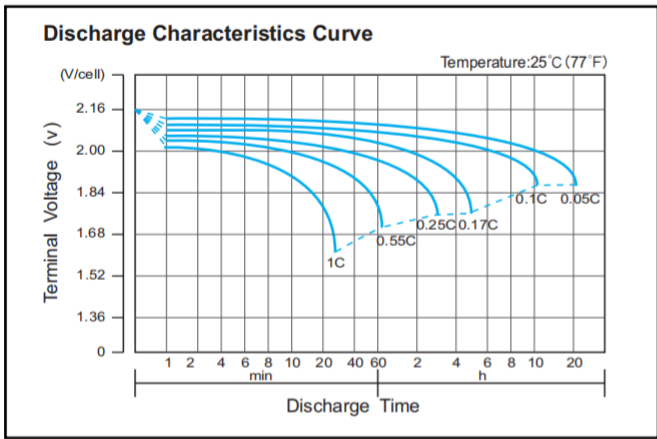
F.V/ Time	30min	1h	2h	3h	4h	5h	6h	8h	10h	20h
1.60V	158.3	102.1	60.5	44.0	33.9	28.5	24.8	19.5	16.4	9.44
1.65V	153.5	96.1	58.5	43.0	33.5	28.1	24.5	19.4	16.3	9.35
1.70V	141.7	93.1	56.9	42.0	32.9	27.6	24.2	19.2	16.1	9.26
1.75V	127.2	86.9	54.4	40.7	32.4	27.2	23.7	18.9	15.8	9.08
1.80V	114.9	77.5	50.4	38.2	30.9	26.0	22.7	18.0	15.0	8.63
1.85V	95.8	66.4	45.1	34.7	28.5	24.0	21.0	16.8	14.1	8.08

Discharge Constant Power per Cell (Watts at 25° C)

F.V/ Time	30min	1h	2h	3h	4h	5h	6h	8h	10h	20h
1.60V	267.8	174.1	110.5	82.5	65.6	55.1	48.2	38.2	32.6	18.8
1.65V	263.3	166.8	107.5	80.8	64.8	54.5	47.7	37.9	32.5	18.7
1.70V	250.0	165.1	104.9	79.2	63.8	53.8	47.2	37.6	32.2	18.5
1.75V	230.4	158.0	101.6	77.4	62.9	53.0	46.4	37.1	31.7	18.2
1.80V	213.8	144.7	95.3	73.3	60.3	50.9	44.6	35.7	30.4	17.5
1.85V	183.3	127.5	87.1	67.4	55.9	47.2	41.5	33.7	28.6	16.5

OPzS Deep Cycle Tubular Flooded Battery 40PzS150

Performance Characteristics



Note: The above data are average values, and can be obtained within 3 charge/discharge cycles. These are not minimum values. Cell and battery designs/specifications are subject to modification without notice. Contact **CSBattery** for the latest information.

Add: Building Evolution, Xingdong industry Park, NO.61, Liuxian 2nd Road, Baoan, Shenzhen, China.

Tel: +86-755-29123661 Email: Sales@CSBattery.cn, Support@CSBattery.cn

Website: www.CSBattery.cn