

OPzS Deep Cycle Tubular Flooded Battery

80PzS770

CSBattery OPzS series is flooded Lead Acid battery that adopts Tubular Plate technology to offer high reliability and performance. The Battery is designed and manufactured according to standards and with DIN40736-2/IEC60896-11 positive spine and patent formula of die-casting active material. OPzS series exceeds standard values with more DIN40736-2/IEC60896-11 than 20 years floating design even more suitable for life at 25°C and is cyclic use(PV/solar, traction etc) under extreme operating conditions.

2V
770Ah

Flooded
Technology

Tubular
Plate



Applications

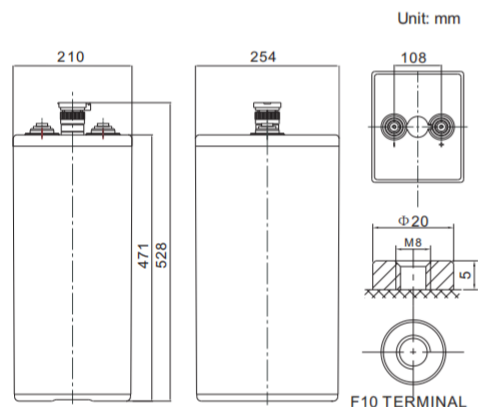
- Solar & Wind Power system
- Nuclear power station
- Telecom backup power supply
- energy saving requirements
Emergency Power System

General Features

- ✓ It can discharge at -40°C-70°C, Charge at 0-50°C
- ✓ Long life expectancy of 20+ years in floating condition
- ✓ Adopts quality silicon nano gel electrolyte
- ✓ Excellent deep discharge recovery capability
- ✓ Deep cycle performance: up to 3300

Dimensions & Weight

Technical Specifications



Cells Per Unit	1
Voltage Per Unit	2
Nominal Capacity	770Ah@10hr-rate to 1.85V per cell @25°C
Weight	Without Electrolyte 45.4kg/With Electrolyte 58.9kg
Internal Resistance	Approx. 0.31 mΩ
Terminal	F10(M8)
Max. Discharge Current	3000A (5 sec)
Design Life	20 years (floating charge)
Maximum Charging Current	115.5 A
Reference Capacity	C24 837.9AH C48 942.6AH C72 989.8AH C100 1012.5AH C120 1032.7AH C240 1050.0AH
Float Charging Voltage	2.23 V~2.25 V @ 25°C Temperature Compensation: -3mV/°C/Cell
Cycle Use Voltage	2.40 V~2.45 V @ 25°C Temperature Compensation: -4mV/°C/Cell
Operating Temperature Range	Discharge: -15°C~50°C Charge: 0°C~40°C Storage: -15°C~50°C
Normal Operating Temperature Range	25°C ±5°C
Self Discharge	Valve Regulated Lead Acid (VRLA) batteries can be stored for up to 6 months at 25°C and then recharging is recommended. Monthly Self-discharge ratio is less than 3.5% at 25°C. Please charged batteries before using.
Container Material	A.B.S. UL94-HB, UL94-V0 Optional.

Length	210±1mm (8.27 inches)
Width	254±1mm (10.0 inches)
Height	471±1mm (18.5 inches)
Total Height	528±1mm (20.8 inches)
Torque Value	10~12 N*m

Battery Discharge Table

Discharge Constant Current per Cell (Amperes at 25° C)

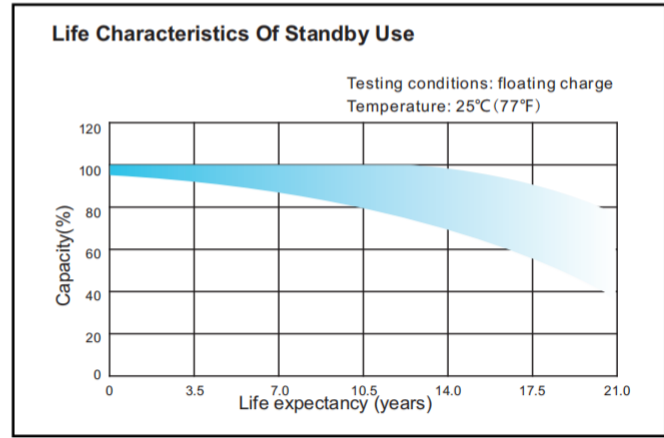
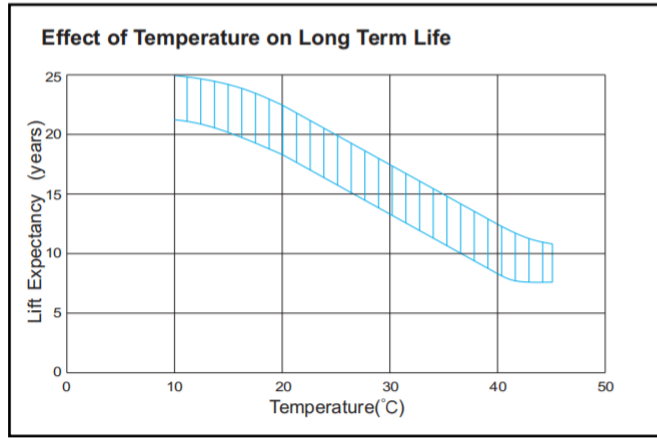
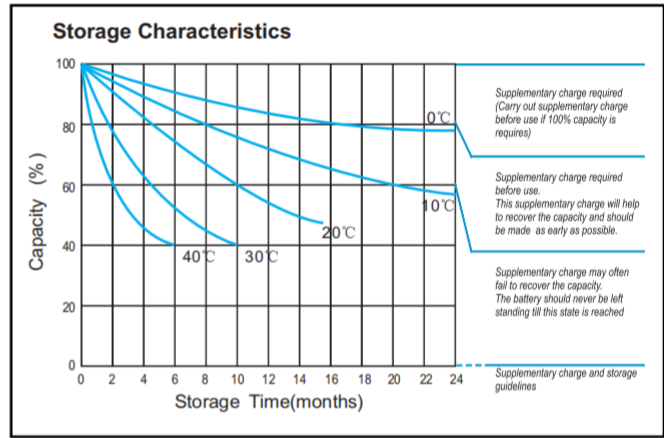
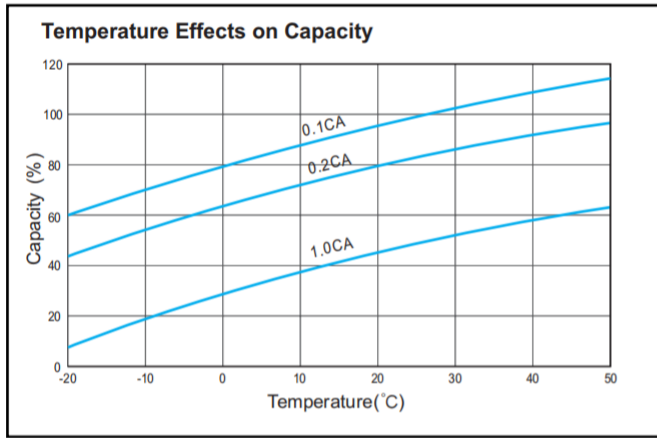
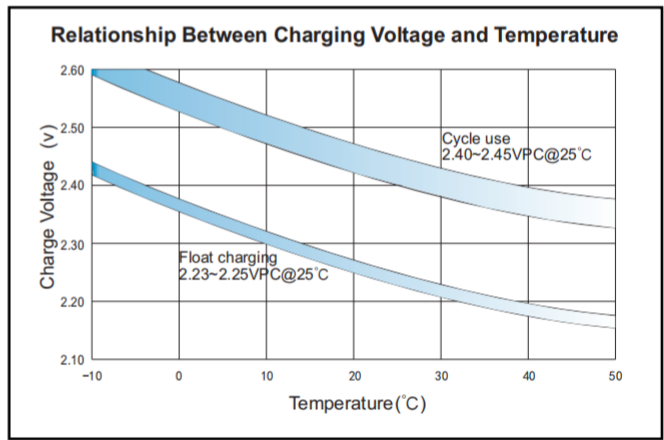
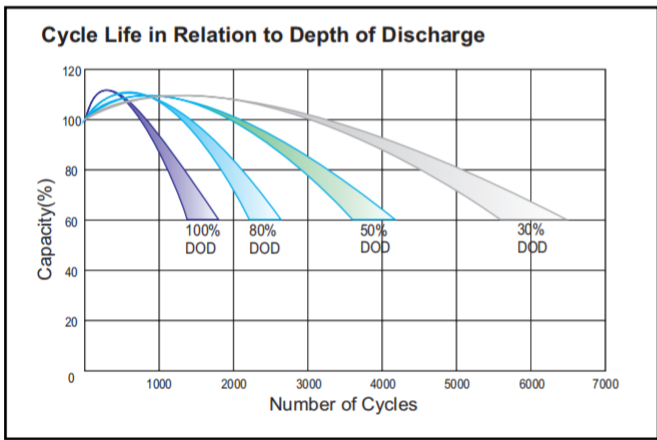
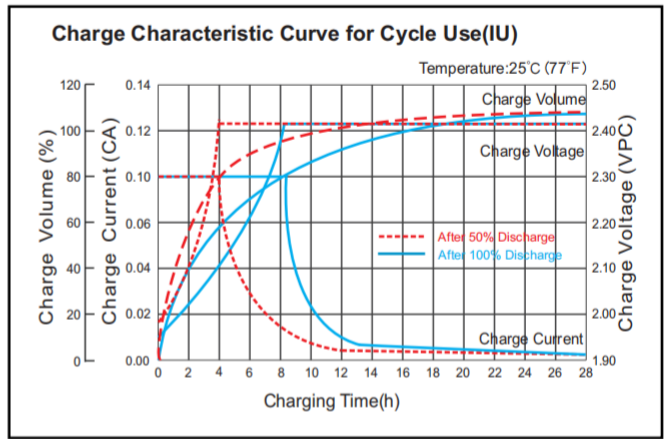
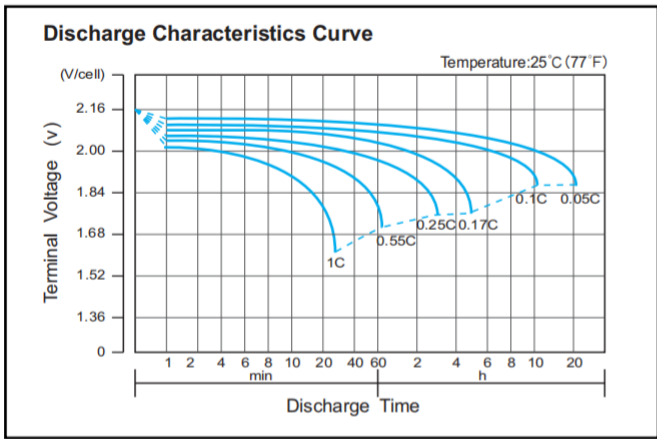
F.V/ Time	30min	1h	2h	3h	4h	5h	6h	8h	10h	20h
1.90V	409.7	324.8	229.0	174.6	138.3	122.9	107.5	83.91	71.96	41.38
1.87V	458.0	358.1	245.7	185.8	145.9	130.0	114.0	87.84	75.19	43.23
1.83V	524.6	399.7	266.5	198.8	153.6	135.8	118.0	91.76	78.42	45.10
1.80V	582.9	433.0	276.5	204.6	156.7	139.0	121.3	94.11	80.85	46.49
1.75V	649.5	463.8	289.0	211.2	159.3	141.5	123.7	95.68	82.47	47.41
1.70V	716.2	478.8	297.3	216.2	162.1	143.7	125.3	96.46	83.28	47.89
1.65V	738.7	508.8	307.3	221.5	164.4	145.7	126.9	97.25	84.08	48.36
1.60V	770.3	526.3	318.9	229.0	169.0	148.8	128.6	98.03	84.89	48.82

Discharge Constant Power per Cell (Watts at 25° C)

F.V/ Time	30min	1h	2h	3h	4h	5h	6h	8h	10h	20h
1.90V	784.2	623.5	442.7	339.4	270.6	241.6	212.6	167.8	146.7	84.33
1.87V	862.9	677.1	469.5	358.9	285.2	255.0	224.8	174.9	152.9	87.93
1.83V	966.6	738.2	499.6	379.3	299.0	265.5	232.0	181.2	158.4	91.08
1.80V	1056	787.5	516.4	389.4	304.7	271.3	237.7	185.1	162.3	93.35
1.75V	1146	822.7	533.1	398.5	308.8	275.2	241.7	187.4	164.7	94.69
1.70V	1229	831.1	546.5	406.8	313.6	279.0	244.2	189.0	166.3	95.59
1.65V	1250	867.9	561.6	415.3	317.7	282.0	246.6	190.6	167.0	96.05
1.60V	1265	894.7	575.0	425.5	325.8	287.1	248.2	191.4	167.8	96.49

OPzS Deep Cycle Tubular Flooded Battery 80PzS770

Performance Characteristics



Note: The above data are average values, and can be obtained within 3 charge/discharge cycles. These are not minimum values. Cell and battery designs/specifications are subject to modification without notice. Contact **CSBattery** for the latest information.

Add: Building Evolution, Xingdong industry Park, NO.61, Liuxian 2nd Road, Baoan, Shenzhen, China.

Tel: +86-755-29123661 Email: Sales@CSBattery.cn, Support@CSBattery.cn

Website: www.CSBattery.cn